

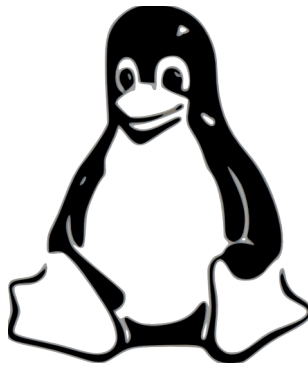
Operating memo



January 16, 2025

Document licensed under "GNU Free documentation 1.3"

Author: Ben Larcher



Why Linux and not WindowsTM?

Linux and the software offered are open source and free, which leads to compliance with legislation and avoids the temptation to illegally download fraudulent software.

The presence of viruses, malware, spyware, trojans and worms is almost non-existent on Linux, thus guaranteeing better security and integrity of the installed system.

There is no need for defragmentation. There is no system slowdown when the hard drive fills up under the Linux system, which simplifies hardware maintenance by the user.

In short, it is a participatory and non-commercial community system, the aim of which is to have the longest possible use of your equipment with as much comfort as possible.

Xubuntu

The operating system

The Xubuntu project is a Linux distribution derived from Ubuntu. The difference is essentially graphic.

Xubuntu uses an XFCE environment, which requires less power.

The personal directory

In the personal directory, accessible through the office, you can organize your documents by category. There you will find the “Documents” and “Downloads” folders.



Corbeille



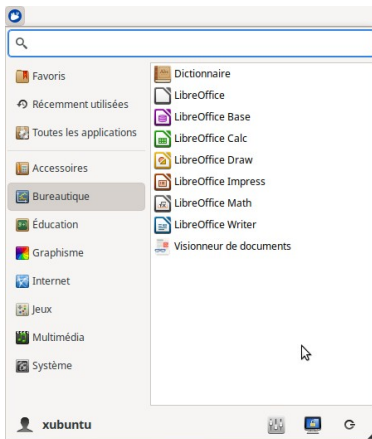
Répertoire personnel

Delete/Move to Trash



Warning !

On the desktop, in the contextual menu (right click on a file or folder), do not confuse “Move to Trash” and “Delete” which permanently deletes the file.

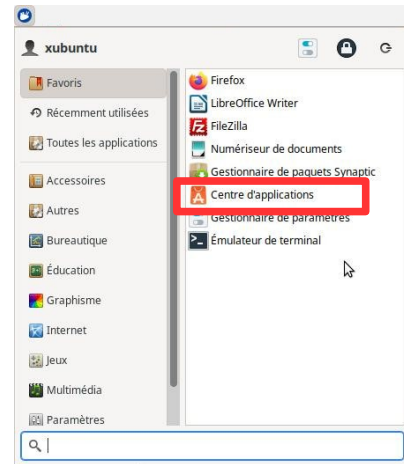


Software

A drop-down menu appears when you click on the blue mouse at the top left. The softwares are then arranged by theme.

Install software

To install software, do not go over the internet, use the application center. It allows you to add software safely.



Password

When you install software, a password is requested.

The password is: xubuntu
(or the one you defined)

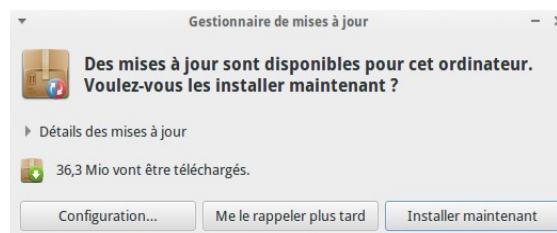
Updates

Updates are proposed automatically every 2 weeks.

These update all programs installed from the application center and the Xubuntu system. During updates, the computer slows down a bit.

Let him install these without asking him too much. The update time depends on how often you perform these updates. The password is required for security.

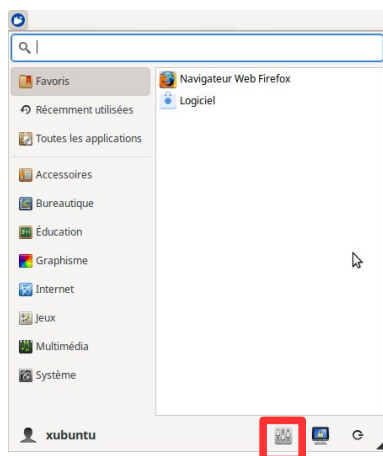
Security updates are done automatically.



CD, USB key, external hard drive

When you plug in a USB stick, external hard drive or insert a CD, these open a window.

To remove a USB key or external hard drive, click on the arrow that appears in the file manager.



Settings

In the settings are:

- The wallpaper
- Various hardware settings (adding printers, mouse speed, etc.)
- Adding a user...

The desktop toolbar

In the desktop bar menu, we find:

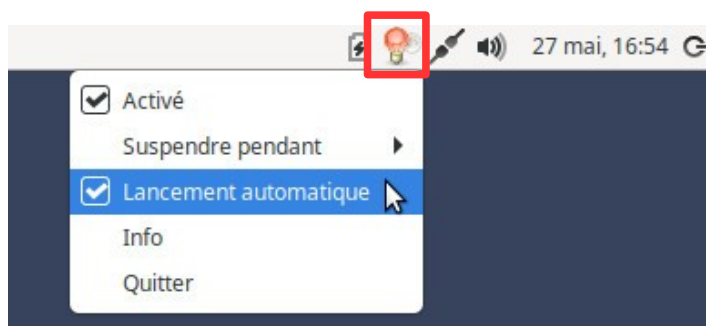
- Wired or wifi internet connections **(1)**
- Sound adjustment **(2)**
- The button to turn off **(3)**



Blue light

The “Redshitft” software (“Accessories” category) reduces blue light from the screen which is harmful to health.

When “Redshitft” is active, a red light bulb appears at the top right. To use it all the time, click on the light bulb and select “Auto Launch”.



Wallpapers

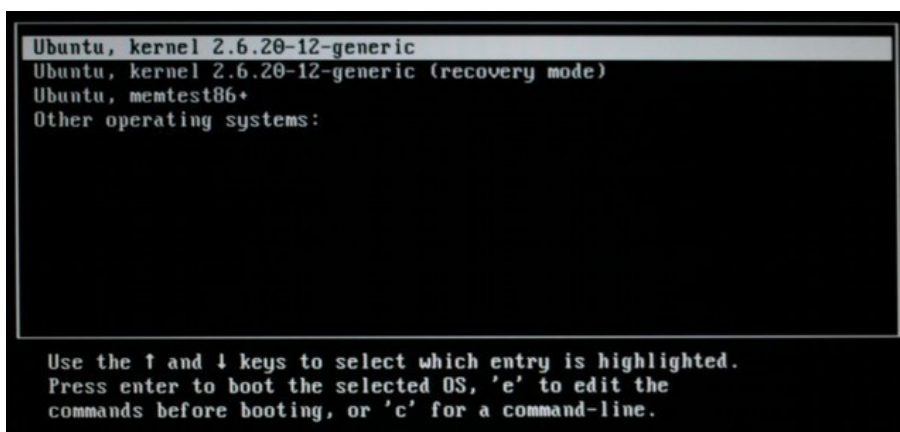
Wallpapers of the free comic strip “Pepper and Carrot” are provided.

Thanks to David Revoy for all his work! <https://www.peppercarrot.com/en/>

Dysfunction

If you turned off your computer directly with the on/off button on your computer or if you suffered a power outage, a screen may appear when you turn it on. Don't panic, just press the “Enter” key.

If when you turn on the computer it says “Low battery”, you need to change the motherboard battery, which costs 2/3 euros (otherwise, the computer will no longer turn on after a certain time).



Warranty

For refurbished computers we sell, a one-year warranty applies as long as the computer is running Linux.

The guarantee is 2 years for social and solidarity economy structures.

Have a question?

We do not provide telephone or email support.

Please use the website : <https://www.handilibre.org>